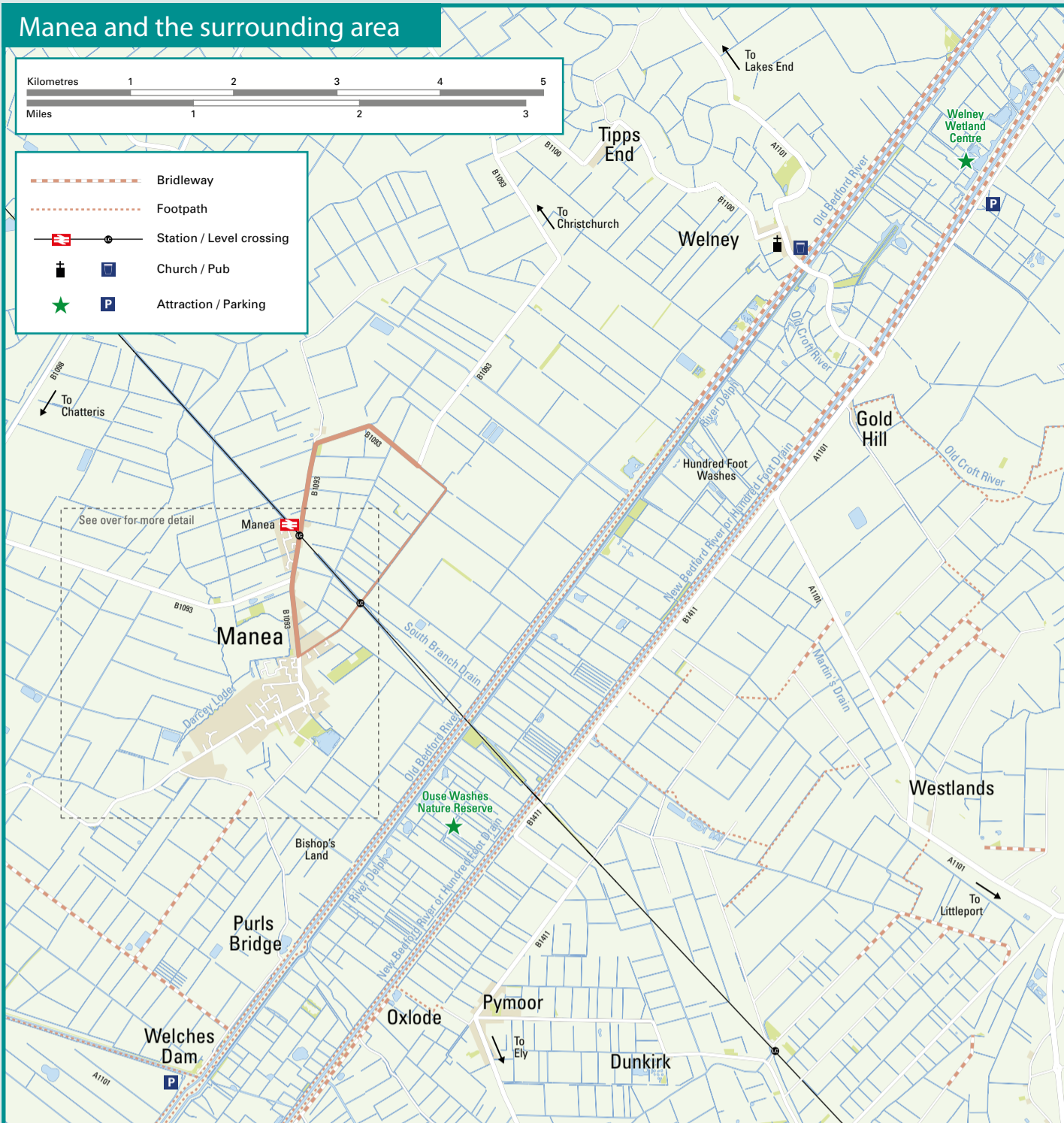




Manea

Walking & Cycling Map

www.herewardcrp.org



Manea

Manea was once a hamlet in the Parish of Coveney but is now a civil Parish in the District of Fenland.

The village stands near the Old Bedford River and 6.5 miles East of March.

The last census in 2022 showed the population (including Welches Dam) to be 2,814.

Landmarks in the local area include Manea Pit, Welches Dam Nature Reserve, and Manea Railway Station.

In the 17th Century, as part of a programme designed to drain the Fens, Charles I planned to build a new town and summer place, called Charlemont.

The scheme was opposed by many local residents and the MP of nearby Cambridge, Oliver Cromwell, who believed the scheme to be "contrary to the law of God and nature".

Manea has a thriving community with an array of groups, clubs and associations all of whom organise social events and activities and work to fill the annual events calendar in the village.

Essential services are available in the form of a GP surgery and local fire station, as well as a village hall and church rooms for hire for events and meetings etc.



The village has a busy and well-stocked village shop / post office and variety of takeaways (check opening times as some do not open during the day), plus social meetings places at the village pub (**The Rose & Crown; map square E5**) and Manea Royal British Legion Club (**map square E5**).

It is here, in the British Legion Club that weekly practises of the Chatteris and Manea Silver Band take place – new members are always welcome and the band can often be found playing at local events and ceremonies: www.chatterisandmanesilverband.co.uk

For those with energetic companions and looking for somewhere where they can let their canine friends loose in safety, a dog exercise field is also available for hire on the outskirts of the village - <https://fallowcorner.co.uk/> (**map square C6**).

Every Summer, the village comes alive with its annual Gala. The event is a mix of entertainment and sideshows, vintage vehicles, craft stalls and rides and attractions for all ages. Entirely run by a hardy group of volunteers, the event has been a firm fixture in the village's calendar since 1956. The group also run seasonal event at Christmas, putting up lights in the village and running a popular Christmas Fayre and putting on a tour of the village with Father Christmas and his sleigh.



Manea Gala draws the crowds every summer.

An assortment of clubs and activities fills the villages calendar, with something on offer for everybody – from weekly social walks to the monthly history group and ladies' football to karate.

Details of everything on offer in Manea can be found in the village's bi-monthly magazine – "Manea Matters".

The magazine has been published and distributed around the village and beyond since 2003 and has proven to be a valuable source of information for locals: www.maneamatters.com

As well as being delivered (by a team of volunteers) across the village, copies of the Manea Matters magazine can be found in the village shop, on Park Street.

A GUIDE TO WALKING & CYCLING AROUND MANEA

Useful information and numbers

- | | |
|--------------------------------------------------------------------------------------------------------------------------------------------------------------------------------------------------------------------------------------------------------------------------------------------------------------------------------------------------------------------------------------------------------------------------------|-----------------------------------------------------------------------------------------------------------------------------------------------------------------------------------------------------------------------------------------------------------------------------------------|
| <p>Hereward Community Rail Partnership
To find useful local information (including videos of Manea and the surrounding area) and details of travel information and access etc. www.herewardcrp.org</p> | <p>Cycling UK
To find out more about how Cycling UK champions the cause for cyclists, as well as finding out information about local routes and events, visit: www.cycling.org/about</p> |
| <p>National Rail
For details of train times to / from Manea and across the wider network and for ticketing enquiries. www.nationalrail.co.uk</p> | <p>Sustrans East of England
01733 319 981
eastofengland@sustrans.org.uk
www.sustrans.org.uk</p> |
| <p>Manea Parish Council
For details of all local council matters and points of contact for local organisations etc. www.manea-pc.gov.uk</p> | <p>Fenland Tourism
www.visitcambridgeshirefens.org</p> |
| <p>Manea Matters Magazine
A "one stop" point of information for local groups etc. www.maneamatters.com</p> | <p>Fenland Policing Team - 101 (non-urgent)
www.cambs.police.uk</p> |
| <p>Highways and Public Rights of Way
To check access or report a fault on a public right of way, to report potholes, report faulty traffic signals, report overhanging vegetation, or for queries concerning winter gritting and for general cycling information, please visit: www.cambridgeshire.gov.uk/residents and click on the relevant section.</p> | <p>Bus Services
For the latest bus information and operators etc, as well as details of other transport providers please visit: www.fenland.gov.uk/article/15121/Local-Transport-Services</p> |

This map has been designed by FourPoint mapping for the Hereward Community Rail Partnership. Funding for the project has come jointly through East Midlands Railways Community Development Fund and Community Rail Network's Community Development Fund.

Whilst every effort has been made to ensure the accuracy of these maps, Hereward Community Rail Partnership, their partners, OpenStreetMap cannot be held responsible for any errors or omissions.

Maps copyright © 2024 OpenStreetMap and its contributors and used under a Creative Commons Share-Alike license CC BY SA 2.0 which means they can be freely copied providing the same or equivalent terms are applied to the copies. OpenStreetMap.org is a collaborative project to map the world free of the restrictions associated with conventional maps; contributions and corrections are welcomed. Contains Ordnance Survey data © Crown copyright and database right 2024.

Places to visit

SM Guy playing field (map square E5)

Located on Park Street and offering a range of play equipment and a modern skate park for the more active, the field is large enough to accommodate team games (football, cricket, and rugby). Equally, it is a great place to take a blanket and enjoy a quiet picnic. A pavilion building with toilet facilities (which are open daily) is available on the field.

Next door to the field is a small car park which provides access to Manea Pit.

Manea Pit (map square F5)

"The pit", as it is known locally, is a real hidden gem! It is a great place for all to enjoy, whether it be a gentle walk around the winding paths or a quiet picnic, or, for those who are keen fishermen, there are specially designated fishing pitches where the local carp syndicate can often be found. Species such as tench, rudd, roach perch, and the occasional bream and pike can also be found in the pit.

Further details and day fishing tickets are available to purchase from the village shop.

To the rear of the pit is the community orchard which is home to an array of fruit trees and which is often tended to by village groups. Visitors are invited to help themselves to the bountiful supply of orchard fruits when in season.



A quiet corner of Manea Pit.

Picnic benches are located around the pit and you can always find a nice spot to sit and enjoy the peace and quiet and maybe spot the odd visiting swan, duck or goose.

To the rear of the pit, on the adjoining fields, during the season, ground nesting birds can sometimes be found to be present, so caution should be taken during these times in order to protect the various visiting species.

The pit is also a popular circular route for local runners who want to escape from the more busy routes.

Ouse Washes Nature Reserve – Welney Wetland Trust (see overview map)

For those wishing to venture further afield and explore the local area and specifically unique flora and fauna, then The Ouse Washes Nature Reserve (the UK's largest area of washland) is a "must visit".

The Welney Wetland Trust occupies over 1000 acres at the northernmost part of the Ouse Washes.



Bird Watching at The Ouse Washes.

It is a mecca for those wishing to enjoy a variety of wildlife species, including resident Skylark, Marsh Harrier, Godwit and Avocet, to name but a few. In Winter, many thousands more species join the residents and the area is home to thousands of migrating wintering birds including Bewick and Whooper Swans – the night-time Swan Feeds are quite an experience; not to be missed.

Details of the reserve, plus opening times, and events etc can be found on the website: <https://rspb.org.uk/reserves-and-events/reserves-a-z/ouse-washes>

Manea Railway Station (map square E1)

Access to Manea is available either by its local bus service or by the regular train service provided at the village's railway station.

Located about a mile from the centre of the village, Manea Station is served by The Hereward Line, which operates between Peterborough and Ely, and offers excellent connectivity to most parts of the country, including Scotland and Wales, sometimes with only one change!

A two-hourly service to either Peterborough or Ely (and Cambridge) is available from the station (Greater Anglia are the primary operator, but some services are provided by Cross Country Trains).

The station itself is operated by Greater Anglia and as part of their Station Adoption Scheme, local volunteers are on hand to ensure that the station and its platforms always look in pristine condition.



Platform 1 at Manea railway station.

As well as installing planters and ensuring they always look tidy, they take care of the community notice boards and work with local train operators and The Hereward Community Rail Partnership to try and secure improvements to the station. In recent years, a new waiting shelter, bicycle racks and notice boards have been installed and a new (free) station car park has opened.

St Nicholas Church Manea (map square E5)

Represented by the Benefice of the Six Fen Churches, Manea's St Nicholas Church welcomes all to its regular services. For more details check out the Diocese of Ely's website: www.elydiocese.org/acny/march/614321/manea-st-nicholas



St Nicholas Church in autumn.

If you choose to venture slightly out of Manea, then there are a host of interesting local places to visit.

The pretty Fenland village of Christchurch is just a short drive away and the thriving market town of Chatteris just a 4-mile journey away (regular bus services are available to Chatteris).

Skylark Garden Centre & Country Store

Located between Manea and Wimblington, on the Wimblington Road.

www.skylarkgardencentre.co.uk

Much more than just a garden centre! Offering a wide variety of home and garden products and furniture, as well as a well-stocked plant nursery, after a wander around the country store, you can always visit Skylark Café and enjoy delicious freshly cooked food or a cuppa and piece of cake!

The centre also has a fun yard with an array of events across the year, ranging from a maize maze to autumn pumpkin patch and festive Santa's grotto. Weekly car boot sales are also held here on a Sunday and a well-stocked fishing lake is also available at the site.

Stonea Camp

Located between Manea and Wimblington, off the Wimblington Road.

www.visitcambridgeshirefens.org/stonea-camp-58

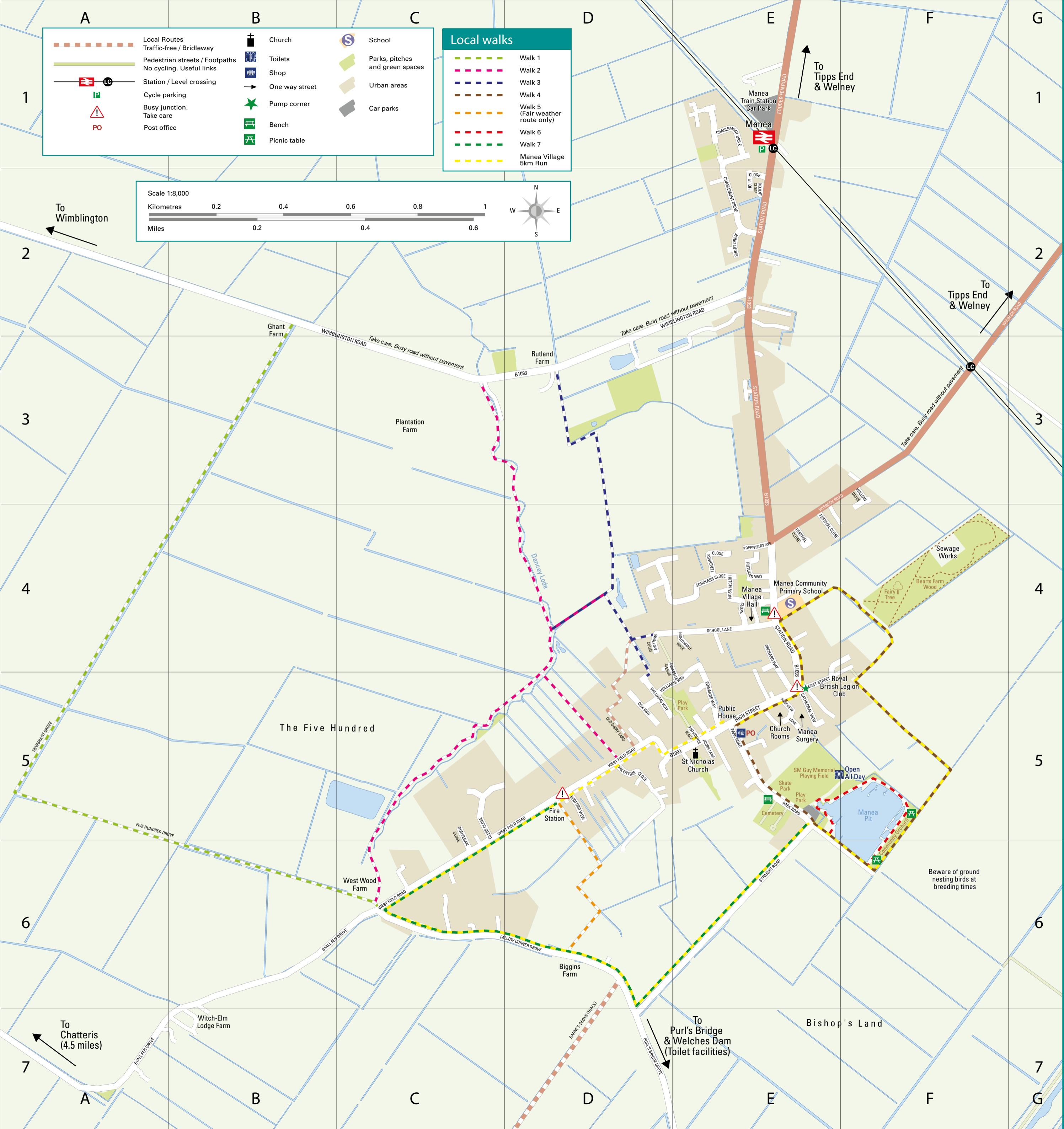
An iron age hill fort located just 2 metres above sea level, the lowest hill fort in Britain.

Fishing in the Fens

If you are visiting Manea and have enjoyed the fishing facilities in the village, then why not stay a little longer in the area and take a look at the great choice of offerings locally (all within a short drive of the village).

Pisces Country Park Fishing at Welney is a great choice, with three lakes set in 20 acres – a haven away from the hustle and bustle - www.piscescountrypark.co.uk/fishing-park/

There are lots of opportunities in and around Manea to fish and whether it be for pike, bream, tench or roach, this local website provides a forum offering a host of information for the best spots locally - www.fenland-fishing.co.uk/?page_id=67



	Local Routes		Church		School
	Traffic-free / Bridleway		Toilets		Parks, pitches and green spaces
	Pedestrian streets / Footpaths		Shop		Urban areas
	No cycling. Useful links		One way street		Car parks
	Station / Level crossing		Pump corner		
	Cycle parking		Bench		
	Busy junction. Take care		Picnic table		
	Take care				
	Post office				

Local walks

-
-
-
-
-
-
-
-

Scale 1:8,000

Kilometres 0.2 0.4 0.6 0.8 1

Miles 0.2 0.4 0.6

Walking and cycling

Why walk or cycle?

- The Fens naturally lend themselves to walking and cycling much more easily and to the less-abled as they are relatively flat and provide easy terrain for all abilities.
- Walking and cycling are both great for your health, and in villages like Manea, walking especially is a great regular social activity which can be enjoyed by all. For the more avid cyclist, there is a well-established cycling club in nearby Chatteris (4 miles): www.chatteriscyclingclub.com
- The vast open Fenland landscapes and big skies are easily enjoyed when walking or cycling and, as well as the many formal routes in the area, due to its easy navigation, Manea can often provide walkers and cyclists with easily enjoyable "off route" trails (please be sure to check public rights of way before crossing land if you are unsure).



- Manea is easily accessible by public transport as well as by car, and the village's railway station has ample cycle racks if you choose to travel on the train and want to leave your bikes parked there. Remember that you can also take your bicycles on the train (check in advance as although there is usually no charge, pre-booking with the train operator is essential to guarantee space), so if you choose to cycle around Manea and wish to travel further afield, either towards Ely or Peterborough, you can connect to many other places to visit and take your bicycle too!



Tips / general rules

- Always give your bicycle the "once over" before going out – check tyres, pedals, brakes, gears and seat height.
- Wear a quality, well-fitted cycle helmet.
- Ride confidently – secure your spot on the road, well away from the kerb, and stay there.
- Be aware of parked / stopped vehicle doors opening as you pass them.
- Check behind you regularly when planning to turn right or overtake.
- Remember that large vehicles have blind spots on the inside, so don't try and overtake them on the left.
- During hours of darkness or in poor visibility, ensure that you can be seen – high visibility clothing is essential.
- Road rules apply to cyclists too. Do not ride on paths, unless blue signs indicate that it is allowed.
- Remember that weather conditions can change quickly, especially in the Fens. Please check the weather forecast and allow sufficient time for walking. Due to the peaty nature of the ground in the Fens, conditions can often be heavy so appropriate footwear is essential.
- If heading towards Welney, please be sure to check the flooding pages for potential hazards and road closures: <https://check-for-flooding.service.gov.uk/>
- Please take care when using roads and when crossing fast or straight sections around Manea.
- Please remember that landscapes in rural areas like Manea can be fragile and careful management is necessary to protect species and habitats. If you are unsure of any of the regulations, please check The Countryside Code: www.gov.uk/government/publications/the-countryside-code